

N A A R +
P A R T N E R S

ARCHITECTURE + URBANISM





"We shape our buildings; thereafter they shape us."



NAARCHITECTURE

"Architecture without human in its focus cannot be permanent."

AHMEDİLYASBİLGİN
ARCHITECT



NAAR +
PARTNERS

0110

ABOUT US

NAAR + Partners

1118

ARCHITECTURE

SERVICES

1924

URBANISM

SERVICES

2528

PROJECTS

NAAR+Partners

2932

VALUES

NAAR+Partners

3336

AWARDS

NAAR+Partners



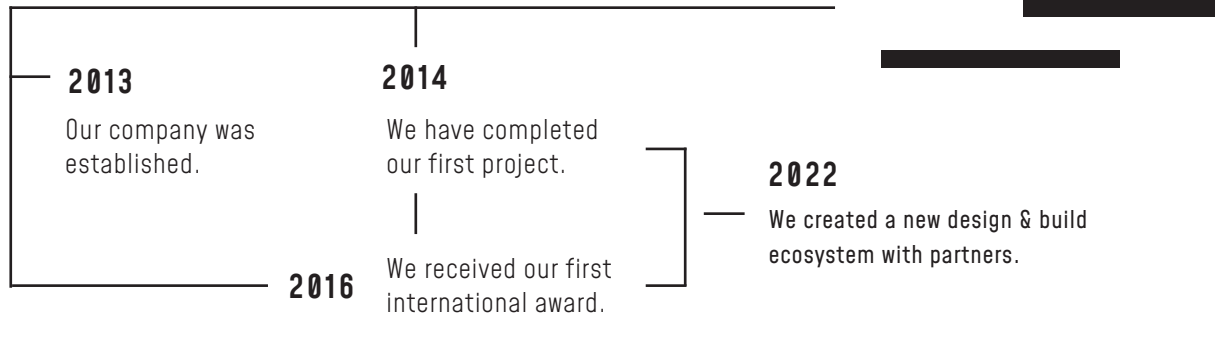
Our core values consists of
partnership, quality, and delivering
exceptional client services.

NAAR + PARTNERS

ARCHITECTURE + URBANISM



CONTINUUM TIMELINE



NAAR+Partners provides CAD and REVIT services, converting conceptual ideas to reality.
Working on various projects in different scales with professionals for 12 years.

ABOUT US

Today, we are an ecosystem comprised of 20 architects, interior designers, urban designers, and support staff. The firm works in multiple practice areas that include cultural projects, such as libraries and museums, municipal and education facilities, urban living, workplace and hospitality projects.

COMMERCIAL

We are prepared for any design or client, regardless of whether you need 3d visual renderings for sophisticated commercial buildings, or structural drawings for the initial stages of a residential complex.

INDUSTRIAL

With NAAR's combined experience of architectural, engineering and visual services, we support our clients with a diverse range of services along with customized project requirements within our industry expertise.

NAAR+Partners IS A PROFESSIONAL ARCHITECTURALDESIGN GROUP CREATING DIFFERENT PROJECTS ALL OVER THE WORLD

ABOUT US

NAAR + Partners

<.>



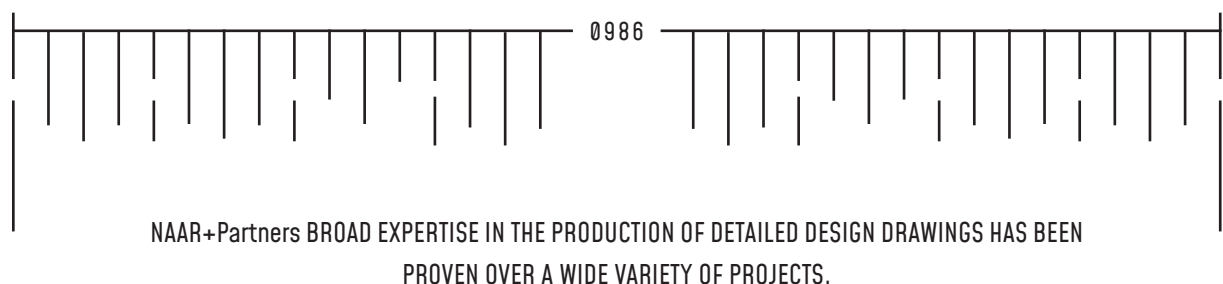
We are **NAAR**

IO

NAAR was established by the founder architect Ahmed İlyas Bilgin in 2013 as a Türkiye based practice that aims to actualize creative ideas through simple, innovative and constructive design solutions whilst keeping the needs for their client at forefront.

The firm combines outstanding project management skills that ensure superior quality of work for their clients within the given budget while ensuring it deliverables on time.

As a client-focused company based on collaboration and commitment, we aim to deliver first-class quality solutions. Our team at NAAR+Partners are connected and responsive ensuring client expectations have been met.





Ahmet ERGÜN

ARCHITECT & INDUSTRIAL DESIGNER

He took his degrees in Architecture and Industrial Design from IMU in İstanbul and collected several awards in both fields. Focused to create structural furniture details .He is designing stunning unique products for special projects. Living in London and Bursa to further increase design knowledge.

Serhat ÖZLÜ

ARCHITECT

Throughout his career, Serhat Özlü has championed a collaborative approach to improve the communications, knowledge sharing, and expectations of the high quality building industry as a whole.

Hasan KAVAN

ARCHITECT

Hasan Kavan broad body of work engages and creates technical solutions for the projects. He has commendable experience in steel and concrete buildings.

Emirhan K. BURSALI

ARCHITECT

Emirhan has experience in BIM modelling and 3D drawings. He is holding a BArch degree with honors. After his graduation, he spent 2 years in Toronto. Now he is a senior principal for interior projects.

AHMED İLYAS BİLGİN

PRINCIPAL ARCHITECT

As leader of NAAR's architectural design studio, Bilgin takes an active role in designing a wide variety of projects. Whether the design is for building, industrial area, or corporate offices, Bilgin brings a fresh perspective, experienced project management skills and skilled charette facilitation to bring client goals and vision to the forefront early in the process.

EVOLVE

SELF-DICIPLINE

Ahmed İlyas Bilgin founded NAAR in 2013. Today, with over 12 years of professional experience, Bilgin oversees planning, design, and construction over a wide range of corporate, building, shopping mall, institutional, hospitality, and residential projects.

Prior, Bilgin spent over 3 years in several universities as an academic. Now, he is also a lecturer at SAU.

**Global | Urban Living | Government | Senior Living**

Bilgin's diverse range of knowledge and experience spans multiple project types. This, coupled with a high level of client satisfaction, has made him an asset to the firm on many high-profile projects.

With an in-depth understanding of corporate office, energy, technology, industrial, mission critical, multi-family, historic preservation, and resort/ hospitality. Bilgin is able to imagine and create striking environments that invite and intrigue while keeping a keen eye on budget and schedule.



Ahmed İlyas **BİLGİN**

ARCHITECTURE + URBANISM



I + A

Graduated from BUU, Bachelor of Architecture with Highest Distinction, received 4 national and international awards.

Ahmed is consistently recognized by clients, consultants, and contractors for ensuring a project's success by his attention to the critical details that can easily get lost in the big picture.

From building detailing to code compliance and quality control, Ahmed İlyas plays an essential role in delivering complex, schedule-dependent projects.

Ahmed İlyas Bilgin is interested in design from human scaled works to urban projects.

EXPERIENCE

ISTANBUL

BURSA

Istanbul Tech. University, BUU
RESEARCH ASSISTANT

2010 2013
www.itu.edu.tr
www.uludag.edu.tr

NAAR+Partners
PRINCIPAL ARCHITECT

2013 2022
www.naar.co



Ahmed's current work is relevant to many issues that are pivotal, including transit-oriented development, urban infill and affordable housing.

To serve the larger community, he is a member of several design review boards and is a long-term leader of the NAAR+Partners.



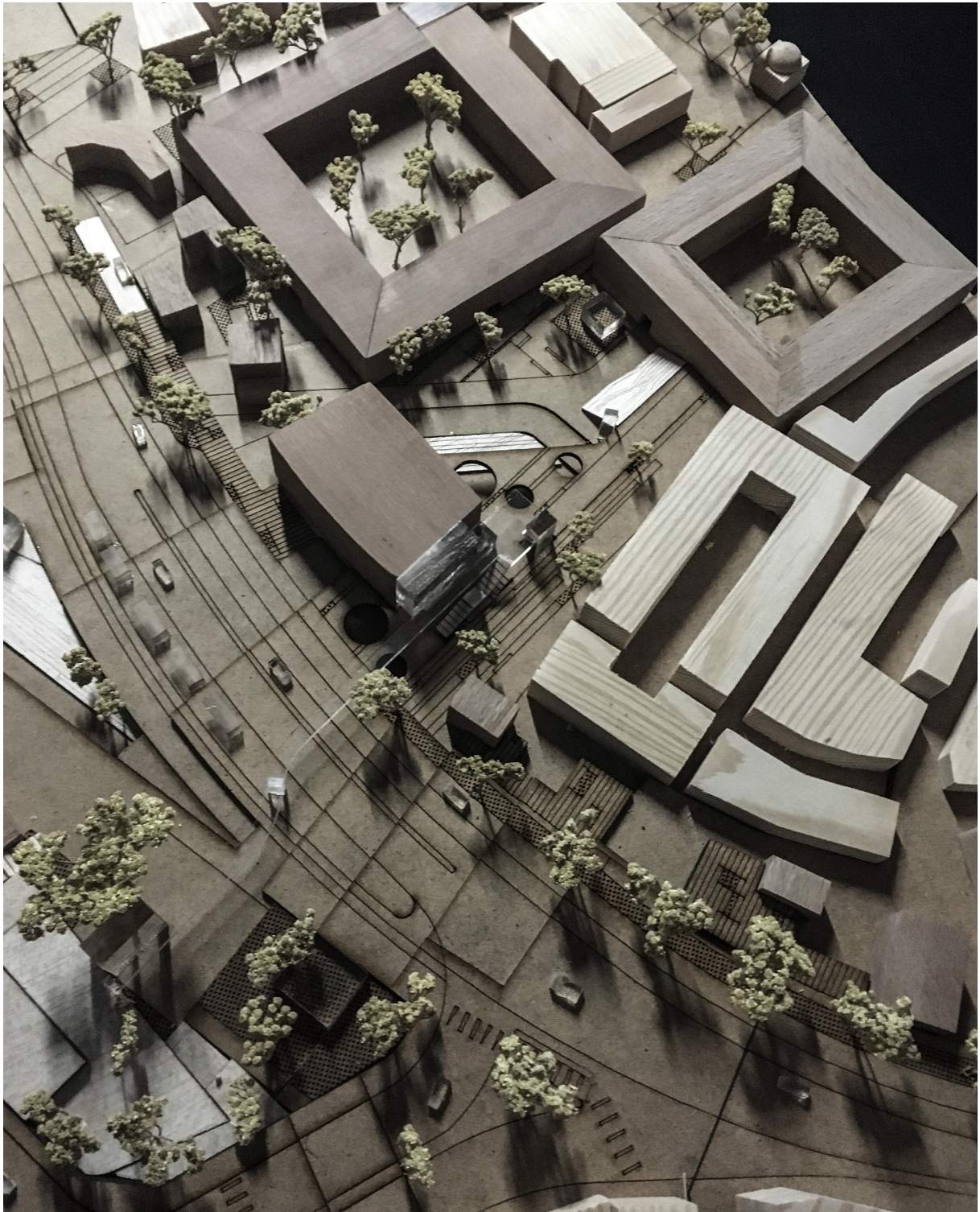
A specialist in Architecture and Urban projects, his project management skills demonstrate that alliance in a practical way.

Meeting tight schedules and strict budgets is essential in design, and Ahmed's works closely with his clients to successfully accomplish this.

FUTURE-FOCUSED

human-oriented

NAAR + Partners





A GLOBAL NETWORK OF IMPACT

Worldwide, our design delivery methods change shape to fit the vision and fulfill the needs of each distinct **area.**

A + U

NAAR + Partners

We design beautiful cities, parks, hotels and the individual special buildings that contribute to them. Our goal is to create beautiful places with lasting value for the communities they serve.

Design is the creative focus of our process – a collaboration that brings together citizens, economists, engineers, architects, developers, policymakers, government officials and builders to construct their collective visions for the future.

Our designs build on the unique character and positive qualities of each place. Working at many scales, we coordinate the design of individual buildings; the public spaces they help create; the neighborhoods, towns and cities of which they are a part and the regional culture they celebrate.

COLLABORATION

BURSA CITY CENTRE

URBAN DESIGN COMPETITION

A+U 2020

Based on UNESCO Heritage are this 45-acre "urban" project includes 1,000,000 Sq m of public space construction and creates an inviting street experience featuring a mix of historical buildings, cafes, retail shops, a town green and open space.

LOCATION Türkiye **SIZE** 3 HA **YEAR** 2020 **TEAM** A+U **STATUS** Competition



IO PRODUCED IN
4 MONTHS

ABOUT THE DESIGN MAP 08

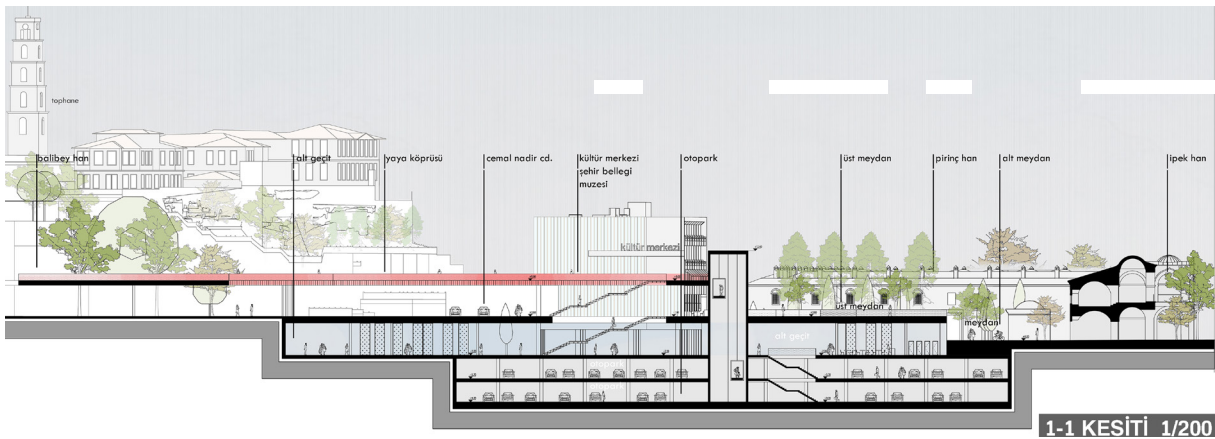
We wanted to show our way of seeing and doing architecture, that's why our consider project very human oriented, without too much car traffic, only the main road which is a must to reach city centre... One of the most striking things about this design is to explore and experience the historical area of Bursa with walking.

3. mention award

NAAR + Partners

<.>

01



CULTURAL CENTER

ARCHITECTURE PROJECT

8
3
2
0

IO PRODUCED IN
3 MONTHS

A+U 2018



02 NAAR + Partners



LOCATION TÜRKİYE **SIZE** 1 HA **YEAR** 2018 **TEAM** A

CATEGORY Competition





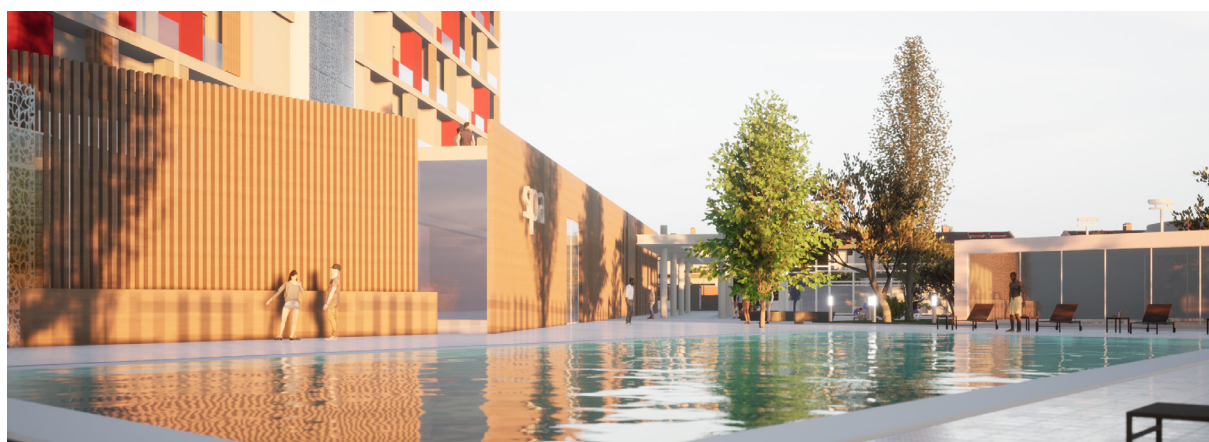
HOTEL

REPUBLIC OF GUINEE

NAAR + Partners

ARCHITECTURE + URBANISM

The scope of work included Environmental Engineering, Survey, Landscape Architecture, Civil Engineering, Structural Engineering and MEP Engineering. The project is an excellent example of the unique application of engineering principles to produce the greenest of possible designs.



NAAR + PARTNERS

<.> 03

▼ I O ≡ ●
GUINEE 2022 2 HA A+U DESIGN

Through rigorous cross-discipline collaboration, we deliver designs that balance aesthetics, function, cost, and quality.

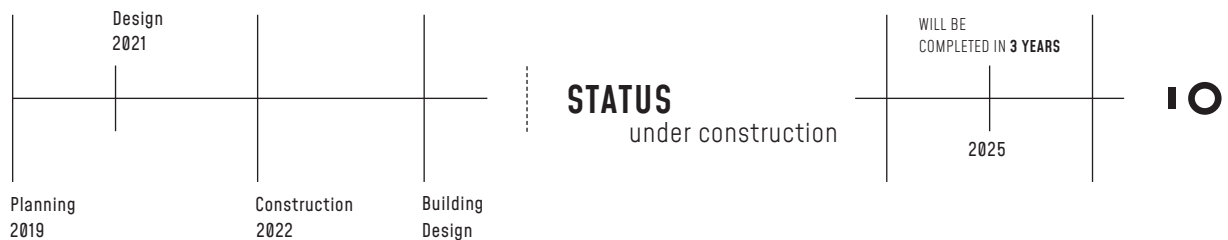
Village CAF is the one of the most important projects of Republic of Guinee, now under construction for Africa Nations Cup 2025. The project includes 52 unique villas and a hotel with 150 room. During the tournament the complex will be used for hosting members of the press from all over the world.

HOTEL DESIGN

green building ——— PRODUCED IN 2 YEARS ——— +

For increasing the quality and accuracy of the building, reducing errors and preventing clashes, NAAR has capability to create 3D Architecture and Building Information Modeling which will enhance visualization, simulation and collaboration between all construction disciplines.

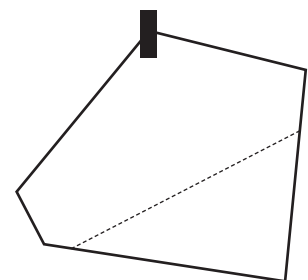
THE PROJECT WILL BE THE FIRST "GREEN" COMPLEX IN CONAKRY, CAPITAL OF GUINEE REPUBLIC.



CIVIL ENGINEERING

Project Management
Facility Master Planning
Feasibility and Assessment Studies
Drainage and Hydrology Design
Utility Systems Coordination and Design

Roadway Design
Subdivision Infrastructure Design
Construction Services
3D Visualizations
Geographic Information Systems (GIS)





ARCHITECTURE + URBANISM



LOCATION Algeria **SIZE** 3 HA **YEAR** 2019 **TEAM** I+A

STATUS Completed



N A A R + P A R T N E R S

IO PRODUCED IN
8 MONTHS

<.>

04

8
3
2
0



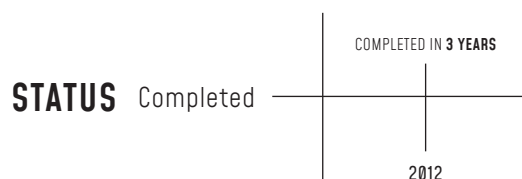
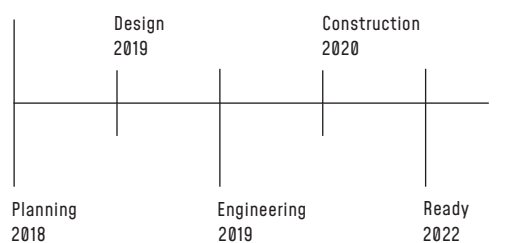
THERMAL HOTEL ALGERIA

Through rigorous cross-discipline collaboration, we deliver designs that balance aesthetics, function, cost, and quality.

ABOUT THE DESIGN RNA10

Thermal Hotel Hammam Righa designed to host guest of Algerian Army. The complex includes 220 rooms and suites.

The hotel stands out with its full-function thermal equipment. In this project, we worked with the Chinese CRCC, one of the largest construction companies in the world.





BUILDING CODES

PRESTIGE 24

We believe every project should have its own codes. That is why we spend too much effort to create unique effect both exterior and inteirors. Architecture should speak of its time and place, but yearn for timelessness.



Prestige 24 is one of the best mid-scale luxury residential projects in Istanbul. We have designed the facade and interiors of this project.

PRODUCED IN 2 MONTHS

interiors ■ I+ARCHITECTURE

< . >



INTERIOR DESIGN

SELF-DICIPLINE

Many things have increased the confusion between these titles in recent years including the improvement of interior design education. A lot of interior designers have become more involved with technical and architectural aspects of interior design.

We believe an architect should have the knowledge of design a building from structural decisions to furniture.

2013	NAAR created the first furniture collection "RECTA".
2014	First interior architecture project in Istanbul.
2022	Completed more than 20 interior projects all over the world.

NAAR+Partners is your design and supply solution for interior projects. With our strong contact with top manufacturers in Türkiye, we provide you quality.



INTERIOR ARCHITECTURE

Despite the fact that each design work can be complex and unique in its own way, the philosophy of each project is unchangeable: we strive to create and implement designs that are both aesthetic, modern and functional. Each member of our team of like-minded people takes a responsible approach to their work and understands the importance of their contribution.

We create interior design projects around the world and are very proud that people from different continents and countries trust us to create their coziness and comfort. We also design commercial interior design. The interior is also able to create the first impression that will be the foundation of success for restaurants, hotels, boutiques and business spaces.

MIXED-USE BUILDING

PUBLIC SPACES & CULTURAL CENTER

06 NAAR +

ABOUT THE PROJECT

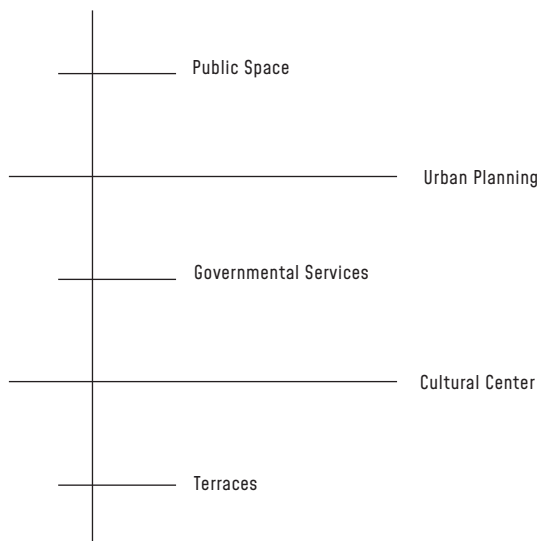
MRN13

Balıkesir Municipality Building designed for a national architectural competition. There was 187 participants for the competition and NAAR received 4. prize.

INFORMATION

GIA013

The complex consists of 3 main parts; government services, cultural services and public space. Our conceptual idea is to design 2 different mass to create contrast; one is "vertical" while the other is "horizontal".



CATEGORY Competition



This building is designed to be part of future green architecture.

▼ I O ≡ ●
BALIKESİR 2016 2 HA I+A DESIGN



NAAR + PARTNERS

8
3
2
0

10 PRODUCED IN
5 MONTHS

1. mention award

U+A 2016





01

+

Innovative Mixed

HOUSE

Repurposing sites, infill projects and community-focused development all make valuable contributions to urban centers, adding new life and new opportunity to neighborhoods.

02

+

Repurposing Sites

RESOURCES

Innovative mixed use developments, affordable multi-family special housing, resource efficient kharmas, welcoming senior housing, and places that draw people together the options are unlimited.

URBAN ■ life ■

+

8
3

AS MORE PEOPLE MAKE **365 DAYS** COMMITMENT TO CITY LIFE, BOTH SPECIAL **URBAN DESIGN** FIRMS AND COMMUNITIES ARE RESPONDING TO THIS SHIFT.

Global | Urban Living | Government | Senior Living

URBAN DESIGN 1. mention award

<.> 07

Designing for Urban covers a wide range of specific needs based on the lifestyle choices, care programs and unique mission of each project. Older special urban design can span a range of acuity levels, including active design, independent living, assisted living, large road care and skilled or completed rehabilitation environments.

SOCIALIZATION

Our architects and urban designers view all of these as design opportunities to create thoughtful environments that can maximize independence, universal design and city in place. Our design process explores options to maximize socialization and foster speciality and the sense of comfortable a city brings.

IO PRODUCED IN
4 MONTHS

Our design strategies aim to enhance the quality of life for the city people population. It is important for us to create pedestrian oriented cities within quality neighborhoods.





MUSEUM OF AGRICULTURE

NAAR + Partners

ARCHITECTURE + URBANISM



TÜRKİYE



2014



1 HA



A



DESIGN

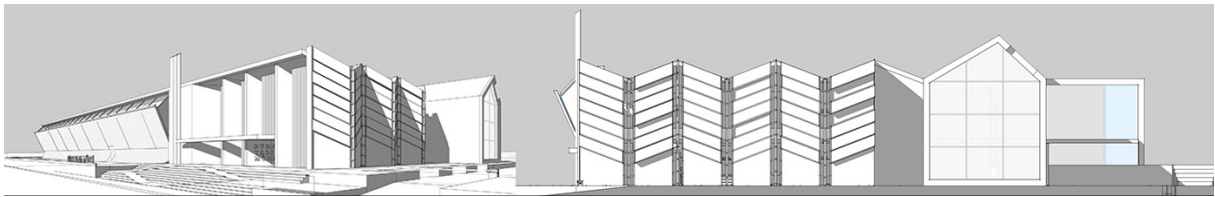
Through rigorous cross-discipline collaboration, we deliver designs that balance aesthetics, function, cost, and quality.



NAAR + PARTNERS

<.> 08

Museum of Agriculture is a 6,000 square meters green building in Bursa, Türkiye. The complex will provide exhibition halls, ateliers, conference halls and open space activity areas to tell the story of agriculture. The museum also supported with virtual reality activities. Main facade is designed with "mud" which is coming from the ground. Building structure system is mainly steel but supported with concrete. NAAR+Partners provided all the necessary drawings including structural and MEP projects.



CIVIL ENGINEERING

Project Management
Facility Master Planning
Feasibility and Assessment Studies
Drainage and Hydrology Design
Utility Systems Coordination and Design

EFFICIENCY

Creating an effective, determined, efficient area requires thoroughly understanding our clients' work styles, strategic direction, and culture exploring every aspect of what makes them unique and then tailoring a specific solution to them. NAAR+Partners is a pioneer in the field of location based solutions, with professional connections in building industry .

IO



ARCHITECTURE + URBA-

8
3
2
0

LOCATION ISTANBUL **SIZE** 300SQM **YEAR** 2017 **TEAM** I+A

STATUS Completed



N A A R + P A R T N E R S

EXPRESS24

IO PRODUCED IN 2 MONTHS

< . >

09



RESIDENTIAL PROJECT

PREMIUM APARTMENTS



ARCHITECTURE + URBANISM



LAKE+ Residential Project is designed to foster life quality that in turn supports 24 hour living concept. The project designed in Istanbul with latest trends and standards for high-rise housing including social and commercial facilities.

ABOUT THE PROJECT ENGINEERING



We always work in collaboration with engineers to create maximum efficiency in construction and final product. We strive to offer the best in line with the possibilities of our customers. In this project, structural engineering has a key role to create cost-efficient but luxury apartments.

▼ I O ≡ ●
ISTANBUL 2019 1 HA I+A DESIGN 8320

Facade is made from aluminium panels. Beyond the modern feel the facade creates, it also offers substantial waste reduction and environmental benefits.

NAAR + Partners





MOSQUE DESIGN

NAAR + Partners

DESIGN

Designed as a stylistic mosque between the traditional historic special architecture of Middle East and newer contemporary architecture to the west, Mardin Mosque is one of the most loved projects of NAAR.

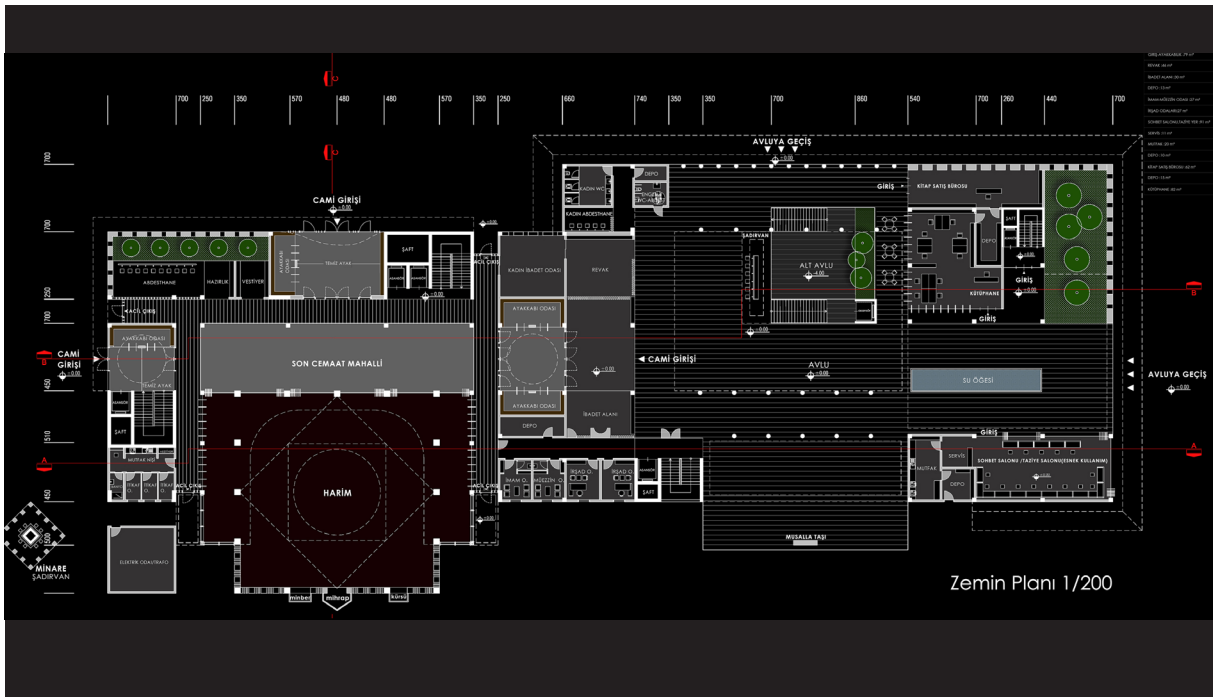
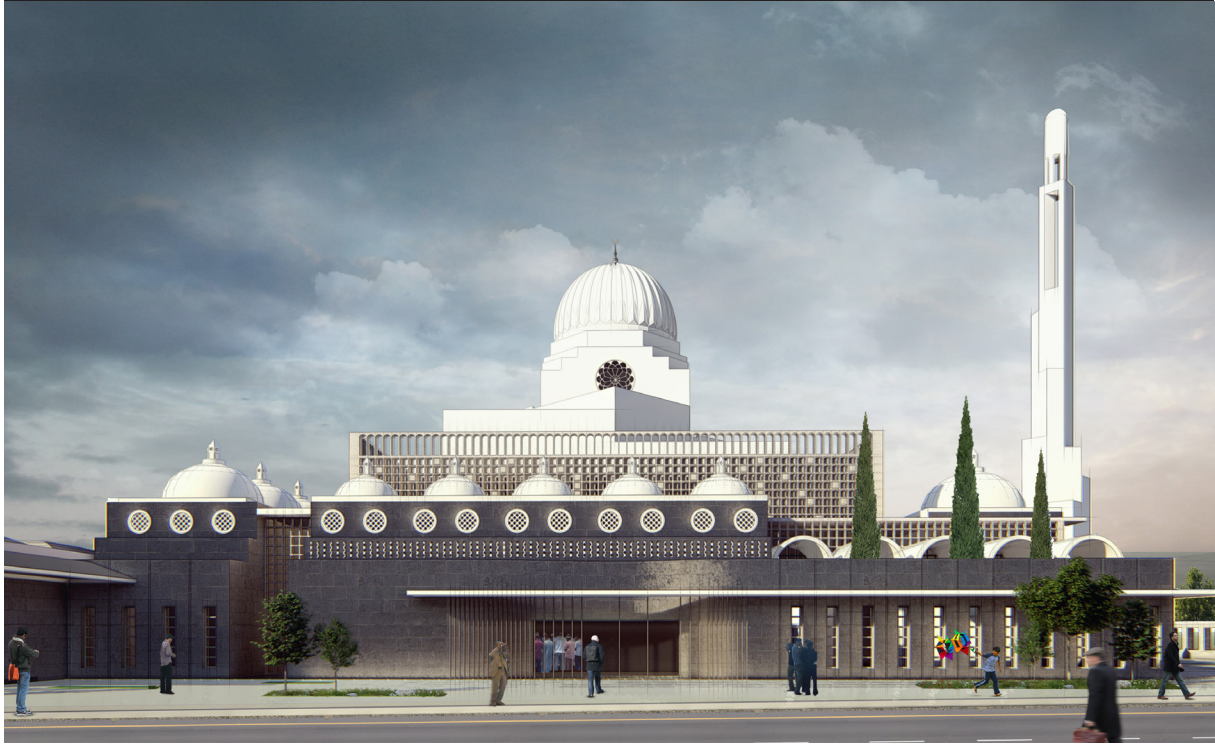
ABOUT THE PROJECT

Although the concept of masjid basically has a very simple function, the "qulliyah" function formed in the Islamic tradition with the additions over time were taken as an example.

INFORMATION

Flexible planning was preferred for use at different times. With a simple approach, the irrefutable elements of the tradition were blended.

Mosque architecture was interpreted with space hierarchy, indoor and outdoor uses and some original additions in the interior.



— — — — —

AWARDS

2021- **2nd Honorable Mention** – Bursa Hans District //
Urban Design Project Competition

2017- **Equivalent Mention Award** – Ministry of Environ-
ment and Urbanization // Neighborhood Design Idea
Competition

2015- **3. Honorable Mention Award**- Balıkesir Metropo-
litan Municipality Service Building Design Competition

2011- **3rd Prize** – International Eco House Design Com-
petition

2010- **2nd Prize** – Çuhadaroğlu Aluminum Steel Structu-
re Design Competition

2008- **Equivalent Mention Award** – MIMED 2008

N A A R +
P A R T N E R S

